

Tumark Eye

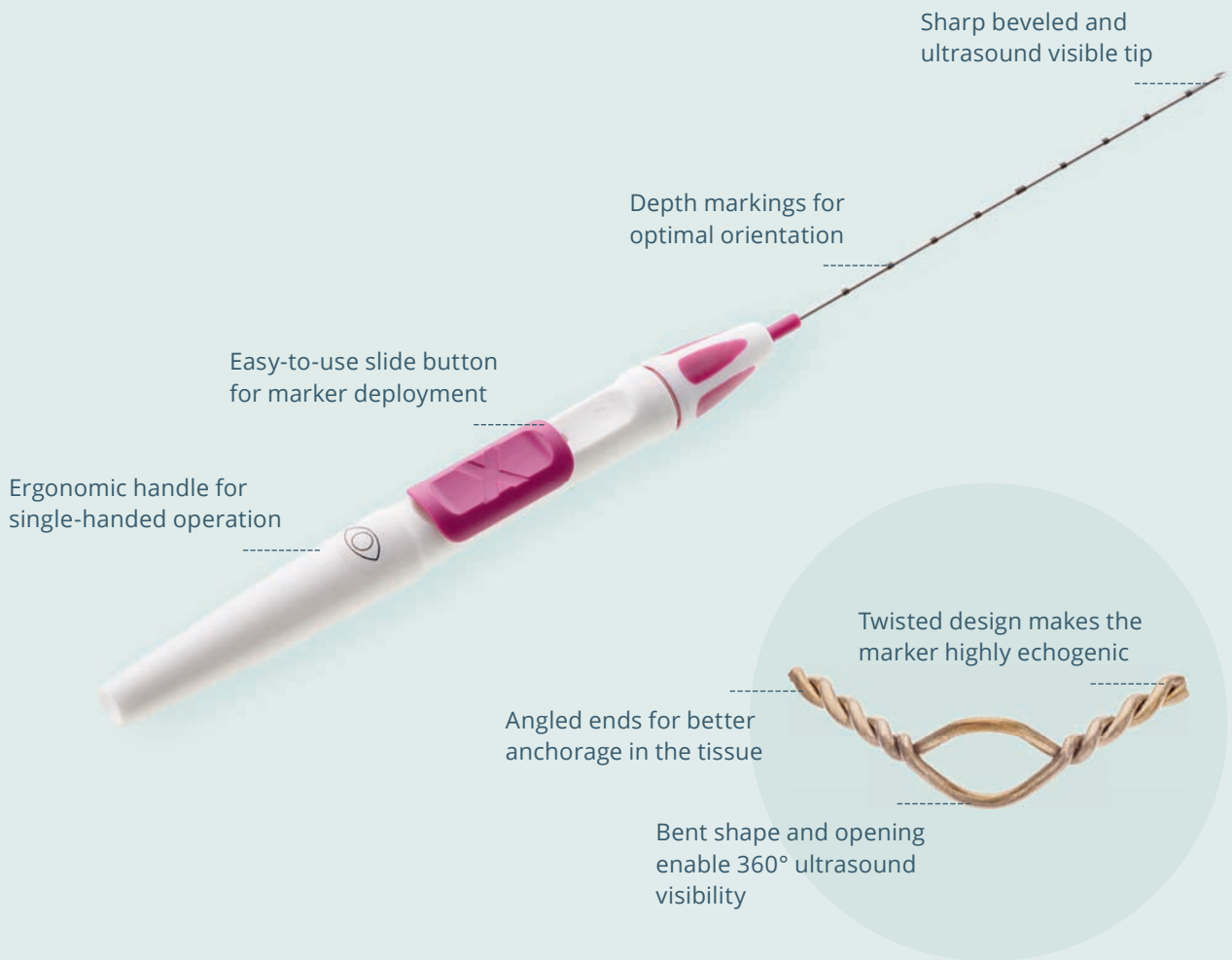


SOMATEX
MEDICAL TECHNOLOGIES



Tumark[®] Eye

360° ultrasound visibility



Tumark® Eye

Highly distinctive shape with 360° ultrasound visibility

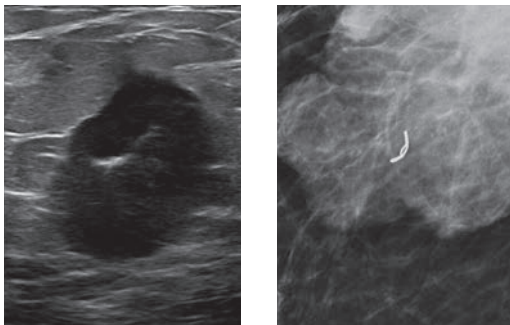
With its bent shape and an open center, “the eye”, the Tumark® Eye biopsy site marker is visible 360° under ultrasound. In addition, the twisted ends make the site marker highly echogenic and enhance ultrasound visibility. The distinctive marker design also allows a clear identification in other imaging procedures (X-ray, CT, MRI).

Long-term stability

The long-term visibility of a biopsy site marker is particularly important in neoadjuvant chemotherapy (NACT). The Tumark® Eye site marker is made of the bio-compatible implant material Nitinol. The marker material expands into a distinct marker shape directly after the puncture is made and becomes anchored in the breast tissue where it remains visible.

Simple handling

The Tumark® Eye is a biopsy site marker for the precise and patient-friendly marking of biopsy sites or suspicious lesions in the soft tissue. This is ensured by a 18-gauge thin, sharp puncture cannula and the ergonomic handle design for single-handed operation.



Tumark® Eye in ultrasound (left) and in mammography (right)



	Product code	Gauge	∅	Length cannula
Tumark® Eye	271510	18	1,20 mm	100 mm
	271512	18	1,20 mm	120 mm

Packing unit per product: 10 pieces, minimum order quantities may be required



999909V1 - E 07/19



Stability

Marker expands into shape upon deployment and anchors firmly in the tissue



Single-handed operation

Ergonomic handle allows for single-handed use



Visibility

Intelligent design provides good visibility in ultrasound, X-ray and MRI